

# SRF Sustainable Transportation Team



## Sustainable Transportation Team



**Ash Narayanan**  
Engineering and Policy  
Project Manager  
anarayanan@srfconsulting.com



**Lydia Statz, AICP**  
Planning Lead  
lstatz@srfconsulting.com



**Becky Alper**  
Programming and  
Communications Project  
Manager  
balper@srfconsulting.com



**Sam Ricord**  
Transportation Engineer  
sricord@srfconsulting.com

## Helping create sustainable, equitable and resilient communities that put people first.

SRF's Sustainable Transportation Team provides transformative mobility solutions to foster healthy, vibrant and resilient communities.

Transportation agencies are increasingly being tasked with simultaneously reducing greenhouse gas (GHG) emissions and vehicle miles traveled (VMT) while improving quality of life and traffic safety, advancing community equity and economic opportunity, and meeting the operational needs of businesses and residents. To help agencies achieve these goals, our experienced planners and engineers use an outcomes-based approach to see the whole picture. From designing walkable streets to developing transition plans for electric vehicles, we apply a sustainability lens to traditional planning and engineering principles. We shift the traditional transportation paradigm by prioritizing long-term benefits over short term gains. Our team's policy, research, communications and program management experience helps our clients understand the costs, tradeoffs and benefits of different investments, create buy-in at all levels, and achieve transformative change.



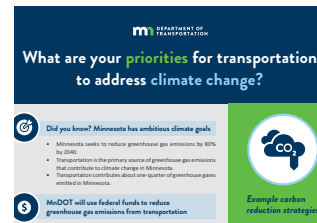
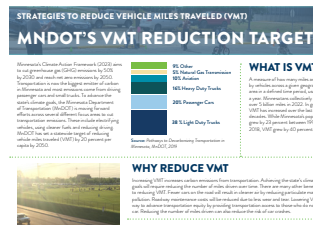
# Our Projects

## Our sustainable transportation services include:

- Greenhouse Gas (GHG) measurement, modeling, and reduction planning
- Vehicle Miles Traveled (VMT) reduction strategies
- Climate Action and Sustainability Planning
- VMT mitigation strategies
- Transportation Demand Management (TDM) policy and strategies
- Bicycle and Pedestrian Planning and implementation
- Transit planning
- Transportation Safety Planning
- Zero Emissions Vehicle (ZEV) transition plans
- Multimodal mobility plans
- Shared mobility plans
- Future Mobility and Micromobility Planning
- Sustainable Transportation Policy Development
- Research
- Funding and grants
- Resiliency Planning and Green Infrastructure
- Equitable Community Engagement
- Scenario Planning
- Benefit-Cost Analysis
- Behavior Change Programming Development

Our team is guiding governmental action at all scales throughout the Midwest as the region's leading experts on transportation GHG reduction.

### Statewide



[MnDOT VMT Reduction Target Analysis and Education](#)

[MnDOT GHG/VMT Workgroup Report and Recommendations](#)

[MnDOT Carbon Reduction Strategy \(subconsultant\)](#)

- MnDOT Resilience Improvement Plan (subconsultant)
- Minneapolis Climate Legacy Initiative Implementation Facilitation (ongoing)

### Citywide



[City of Bloomington GHG and VMT Analysis and Strategies](#)

### Innovative Mobility



[Saint Paul Evie carshare expansion \(ongoing\)](#)

### Electric Vehicles



[State of Nebraska National Electric Vehicle Infrastructure \(NEVI\) 2.0 Plan](#)



[City of Bloomington Electric Vehicle Infrastructure Plan](#)



[Oshkosh Electric Vehicle Plan \(ongoing\)](#)

### Industry Insights

Our team shares thoughts on recent legislative changes, the role of equity, program implementation, and more on our [Thought Leadership page](#).